



Lumisave™

Industrial LED Technologies Ltd.



**BUILT MINING TOUGH**





---

## Lumisave, the name you can trust.

Since 2009, Lumisave has been committed to developing a high quality, durable and reliable industrial LED fixture. Using innovative technologies and working closely with certified testing agents, Lumisave has been able to provide better energy savings while also able to provide custom products to meet the ever changing needs of our customers.

Located in beautiful Prince George, BC; Lumisave is proud to be one of Canada's most northern industrial LED fixture manufacturers.



# Our Commitment to the Mining Industry

Being situated in the industry rich Northern British Columbia region, some of our first products were developed specifically for the harsh mining environments seen in Northern and Western Canada. This industry demands rugged lighting products that are able to withstand some of the most unforgiving environments. By working with various mining partners we have been able to develop patented products exclusive to Lumisave, specifically for what the industry requires. In addition to heavy industrial fixtures, while working with the mining industry over the years we have been able to develop an industry-leading service repair program allowing for the most sustainable solutions for repair and re-use. Unmatched product quality and service has allowed Lumisave to grow to become a trusted name in Industrial Lighting.

---

## What's Important to Us

### Vision

With a focus of continually improving our product and service quality, Lumisave will continue to grow and become a leader in the LED lighting industry. We understand the value in being able to adapt quickly in the ever-changing market conditions to provide our customers with quality and functional products.

### Quality

Each fixture is assembled by hand and inspected for quality by our in-house lighting technicians ensuring consistent product quality.

---

### Service

Lumisave takes pride in providing unmatched service support for all of our customers, offering lighting audits, lighting layouts & custom designs to fit any unique application

### Local Manufacturing

All Lumisave products are assembled at our Prince George, BC location, significantly improving lead times and decreasing any downtime on site





# Project References

---

## Teck Resources Ltd.



### Major Projects

Fording River Coal Mine  
Coal Mountain Mine  
Elkview Coal Mine  
Green Hills Coal Mine  
Line Creek Coal Mine  
Highland Valley Copper

### Additional Info:

Ongoing (retrofit & new builds), Maintenance & Service Programs, Warehousing Buildings, Operations & Equipment.

## Argonaut Gold Ltd.



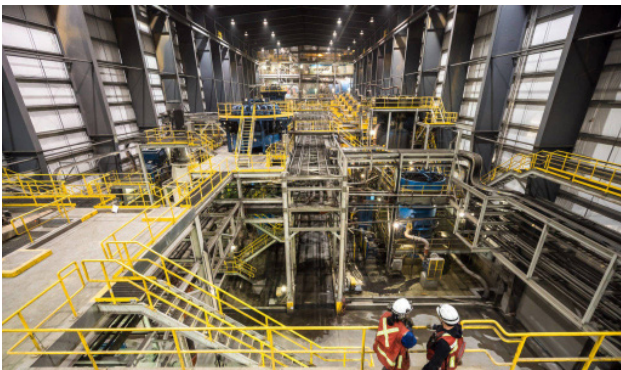
### Major Projects

Magino Mine Project

### Additional Info:

New Construction, Design and Planning Assistance.

## New Crest Mining Ltd.



### Major Projects

Red Chris Mine

### Additional Info:

Retrofit Applications, New Construction, Design and Planning Assistance.

**1-855-563-7284**






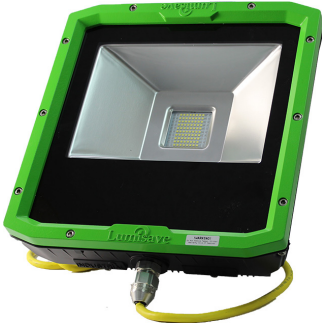
Lumisave

## Key Features of the UMS:

- Built in Junction Box - Added Installation Convenience
- Heavy Industrial Machined Aluminum Construction
- Stanchion & Wall Mount Compatible
- Fully sealed IP65 ratings
- Approved for use In Hazardous Locations
- Patent Protected Design exclusive to Lumisave
- Straight or Angled Mounting Options



# AT A GLANCE - FL395 & FL375

	FL395 FLOOD LIGHT	FL375 FLOOD LIGHT
	 <p>Made to withstand extreme conditions, the FL395 Heavy Industrial LED Flood Light provides 22,500 lumens of light. This exclusive flood light has been built from the ground up with the harshest of environments kept in mind, so this flood light is able to handle anything you throw its way.</p>	 <p>The FL375 is an extremely durable single-chip Industrial LED light suitable for the harshest consumer locations. Our Heavy Industrial series LED lights are exclusive to Lumisave and are designed, assembled, and tested in Canada. The FL375 is one of the toughest products in our line up.</p>
Wattage	150W	80W
Lumens	16,972 LM (Delivered)	8,183 LM (Delivered)
Voltage	120-277V or 347-480V	
Hazardous Ratings	CLASS I, DIV. II, GROUPS A,B,C,D - T3C CLASS II & III, DIV. II - T5	
Colour Temperature	5000K	
IP Rating	Wet Location - IP66	
Weight	17KG	9.5KG
Dimensions	603mm x 343mm x 231mm	343mm x 354mm x 289mm
Warranty	5 Year	5 Year
Temperature Rating	-40°C to 40°C	-40°C to 40°C

**1-855-563-7284**









# AT A GLANCE - LNL | BL420

	LNL HAZARDOUS LINEAR LIGHT	BL420 HAZARDOUS BAY LIGHT
	 <p>The LNL Series Linear Light is the perfect solution for low mounted lighting applications requiring low clearance. This fixture provides high output LED's along with high-quality construction offering industry leading performance and durability for your hazardous area lighting needs.</p>	 <p>High powered LED's offering superior brightness allow the BL420 Series Industrial bay light to excel in a variety of lighting applications. Built with high quality components, offering Lumisave's trusted Industrial strength, along with various accessories allow this fixture to shine in any application.</p>
Wattage	30W 40W 50W 60W 65W 75W	30W 60W 80W
Lumens	10,500 LM	9,525 LM
Voltage	120-277V or 347-480V	
Hazardous Ratings	CLASS I, DIV. 2 GROUPS A,B,C,D - T6 CLASS II, DIV. I, GROUPS E,F,G / DIV. 2 GROUPS E,F,G - T6, CLASS III - T6	CLASS I, DIV 2-T3C, CLASS I, ZONE 2-T3C CLASS II & III, DIV 2-T5
Colour Temperature	3000K-6500K (5000K STANDARD)	5000K
IP Rating	Wet Location - IP66	
Weight	4-5.5KG	4.5-6.8KG
Dimensions	2' & 4'	Varies- See Cut Sheet
Warranty	5 Year	5 Year
Temperature Rating	-40°C to 55°C	-40°C to 40°C

**1-855-563-7284**





# AT A GLANCE - HFL | HBL

	HFL HAZARDOUS FLOOD LIGHT	HBL HAZARDOUS BAY LIGHT
	 <p>The HFL Series Flood Light is the perfect solution for flood lighting applications in demanding environments. This fixture provides high output LED's along with high-quality construction offering industry leading performance and durability for your hazardous area lighting needs.</p>	 <p>The HBL Series Bay Light is the perfect solution for low/high bay lighting applications in demanding environments. This fixture provides high output LED's along with high-quality construction offering industry leading performance and durability for your hazardous area lighting needs.</p>
Wattage	30W 60W 80W 100W 150W 200W	30W 60W 80W 150W 200W
Lumens	28,000 LM	28,000 LM
Voltage	120-277V or 347-480V	
Hazardous Ratings	CLASS I, DIV. 2 GROUPS A,B,C,D - T3 CLASS II, DIV. I, GROUPS E,F,G / DIV. 2 GROUPS E,F,G - T3, CLASS III - T3	CLASS I, DIV. 2 GROUPS A,B,C,D - T3 CLASS II, DIV. I, GROUPS E,F,G / DIV. 2 GROUPS E,F,G - T3, CLASS III - T3
Colour Temperature	4000K / 5000K / 5700K	
IP Rating	Wet Location - IP66	
Weight	4.2-8.3KG	3.5-8.2KG
Dimensions	265mm-381mm x 203mm-238mm	234mm-370mm (Diameter)
Warranty	5 Year	5 Year
Temperature Rating	-40°C to 40°C	-40°C to 50°C



# AT A GLANCE - SL660 | FL550

	SL660 AREA LIGHT	FL550 FLOOD LIGHT
	 <p>The SL660 series Area Light is suited for various outdoor high mounted area lighting applications. This fixture is equipped with high-performance LED's along with high quality construction offering industry leading performance and durability for your outdoor area lighting needs.</p>	 <p>The FL550 Series Flood Light is the perfect solution for high mounting applications. With high performance LED's along with high-quality construction, this fixture performs efficiently and reliably within any environment it is utilized within.</p>
Wattage	100W 150W 200W 400W	240W 360W 480W 720W 960W
Max Lumens	60,000 LM	124,800 LM
Voltage	120-277V or 347-480V	
Hazardous Ratings	GENERAL LOCATION ONLY	
Colour Temperature	3000-5700K (5000K STANDARD)	3000-6500K (5000K STANDARD)
IP Rating	Wet Location - IP65	
Weight	7.4-17.8KG	12.3-20.3KG
Dimensions	648mm x 482mm x 144mm (400W)	580mm x 394mm x 201mm (480W)
Warranty	5 Year	5 Year
Temperature Rating	-40°C to 40°C	-40°C to 40°C

**The products highlighted are representative of key products within the Energy Sector, for full product offerings see the Lumisave Lighting Guide.**

**1-855-563-7284**



# The Lumisave Advantage

---

- Our qualified lighting technicians assemble and inspect for quality all fixtures here in Canada
- Shorter lead times on purchases and quick turnarounds for all warranty claims, reducing downtime
- 5 year limited warranty on any defect in material or workmanship
- Technical support
- 80,000+ hours LED lifespan reducing maintenance costs
- Most fixtures are available in AC Voltages from 110V to 480V
- Our Heavy Industrial and Industrial series fixtures can be Hazardous Location Certified for:  
Class I Div 2/Zone 2, Class II & Class III Div 2
- Our rugged, weather proof designs are ready to tackle the harshest of climates



[www.lumisave.com](http://www.lumisave.com)





Industrial LED Technologies Ltd.

2098 Robertson Road, Prince George, BC, V2N 1X6

1-855-563-7284

[www.lumisave.com](http://www.lumisave.com)

