

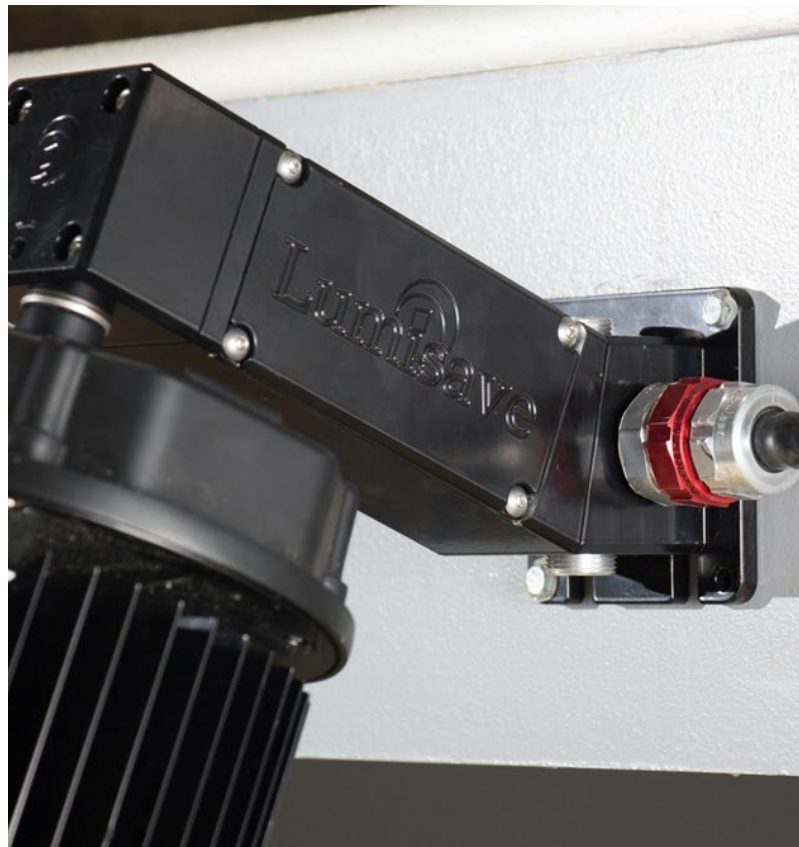
# Lumisave™

Industrial LED Technologies Ltd.

**BUILT FOR MARINE  
ENVIRONMENTS**







---

## *Lumisave, the name you can trust.*

Since 2009, Lumisave has been committed to developing a high quality, durable and reliable industrial LED fixture. Using innovative technologies and working closely with certified testing agents, Lumisave has been able to provide better energy savings while also able to provide custom products to meet the ever changing needs of our customers.

Located in beautiful Prince George, BC; Lumisave is proud to be one of Canada's most northern industrial LED fixture manufacturers.



# ***Our Commitment to Marine Industries***

Lumisave offers an extensive range of products and solutions designed specifically to withstand the rigors and hazards of the marine industry and the great ocean environments of the world.

Proven products that operate safely and reliably in the most hazardous and corrosive environments, coupled with industry leading sales and service support, provide a best-in-class solution for offshore platforms, ship owners, shipyards, OEMs, and other marine applications.

Our localized production and industry leading after sales support allow us to address any issues that may be encountered on site, greatly minimizing any downtime for our customers.

---

## ***What's Important to Us***

### ***Vision***

With a focus of continually improving our product and service quality, Lumisave will continue to grow and become a leader in the LED lighting industry. We understand the value in being able to adapt quickly in the ever-changing market conditions to provide our customers with quality and functional products.

### ***Quality***

Each fixture is assembled by hand and inspected for quality by our in-house lighting technicians ensuring consistent product quality.

---

### ***Service***

Lumisave takes pride in providing unmatched service support for all of our customers, offering lighting audits, lighting layouts & custom designs to fit any unique application

### ***Local Manufacturing***

All Lumisave products are assembled at our Prince George, BC location, significantly improving lead times and decreasing any downtime on site



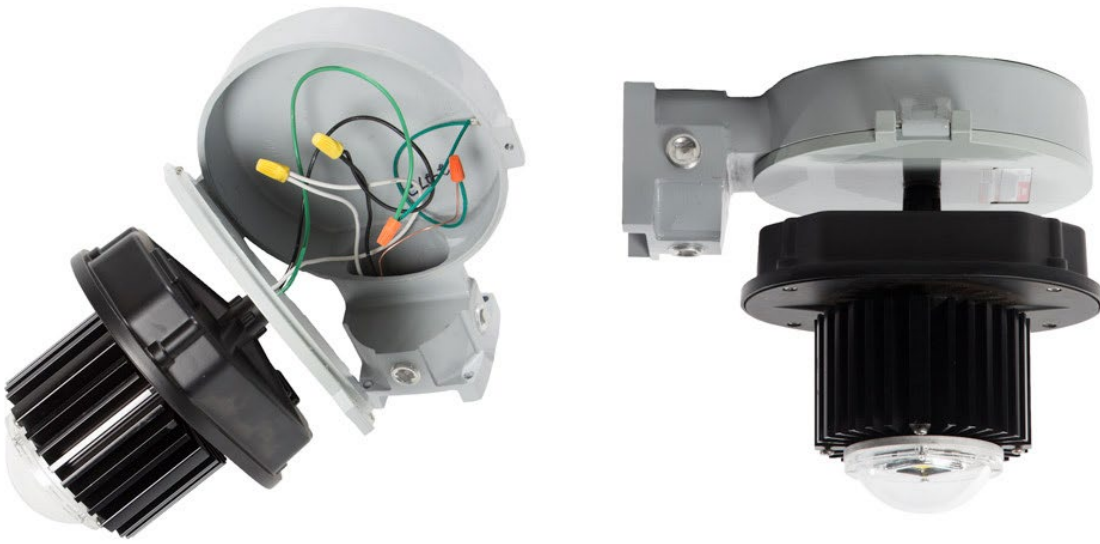
# Key Accessories - UAP & UMS

## Installation Made Easy

*Through working closely with various customers to match their needs within the industrial sector, Lumisave has developed and implented unique mounting accessories for retro-fit and new infrastructure installations.*

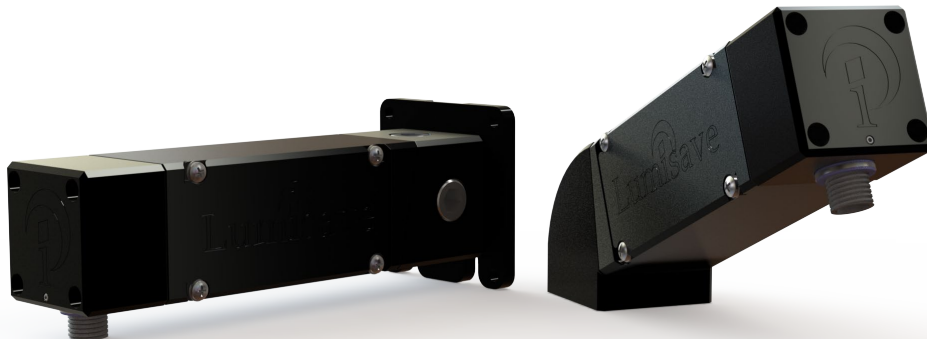
### Universal Adaptor Plate - UAP

*The UAP is a retrofit adaptor plate developed for the BL420/BL520/BL550 Series fixtures providing an easy mounting option for your new or existing lighting projects. The UAP adapts to fit any Crouse Hinds DMV or VMV Series mounting options, saving time, money and resources on retrofit installations.*



### Universal Mounting System - UMS

*The UMS is a unique universal mounting accessory that has been designed and developed for the BL420/BL520 & BL550 Series fixtures. The UMS can be utilized as a wall or stanchion mount with the ability to be straight or angle mounted.*







Lumisave

## *Key Features of the UMS:*

- *Built in Junction Box - Added Installation Convenience*
- *Heavy Industrial Machined Aluminum Construction*
- *Stanchion & Wall Mount Compatible*
- *Fully sealed IP65 ratings*
- *Approved for use In Hazardous Locations*
- *Patent Protected Design exclusive to Lumisave*
- *Straight or Angled Mounting Options*



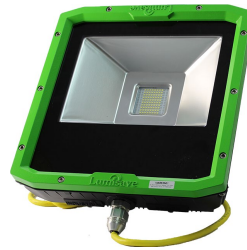
# The Details



## FL395

### Heavy Industrial LED

Made to withstand extreme conditions, the FL395 Heavy Industrial LED Flood Light provides 22,500 lumens of light. This exclusive flood light has been built from the ground up with the harshest of environments kept in mind, so this flood light is able to handle anything you throw its way.



## FL375

### Heavy Industrial LED

The FL375 is an extremely durable single-chip Industrial LED light suitable for the harshest consumer locations. Our Heavy Industrial series LED lights are exclusive to Lumisave and are designed, assembled, and tested in Canada. The FL375 is one of the toughest products in our line up.



## FL550

### High-powered Flood Light

The FL550 Series Flood Light is the perfect solution for high mounting applications. With high performance LED's along with high-quality construction, this fixture performs efficiently and reliably within any environment it is utilized within.

Wattage	150W	80W	240W/360W/480W
Lumens	16,972 LM	8,183 LM	65,000 LM
Voltage	120-277V or 347-480V	120-277V or 347-480V	120-277V or 347-480V
Hazardous Rated	✓	✓	
IP Rating	Wet Location - IP65	Wet Location - IP65	Wet Location - IP65
UL/ETL Rated	✓	✓	✓
Warranty	5 Year	5 Year	5 Year
Temperature Rating	-40°C to 40°C	-40°C to 40°C	-40°C to 50°C
Customizable	✓	✓	

**1-855-563-7284**







# The Details



## **HBL**

### **Marine / Hazardous Bay Light**

The HBL Series Bay Light is the perfect solution for low/high bay lighting applications in demanding environments. This fixture provides high output LED's along with high-quality construction offering industry leading performance and durability for your hazardous area lighting needs.

## **HLL**

### **Marine / Hazardous Linear Bay Light**

The HLL Series Linear Light is the perfect solution for low mounted lighting applications requiring low clearance. This fixture provides high output LED's along with high-quality construction offering industry leading performance and durability for your hazardous area lighting needs.

## **XBL**

### **Marine / Explosion Proof Bay Light**

The XBL Series Bay Light is the perfect solution for all explosion proof lighting applications. This fixture provides high output LED's along with high-quality construction offering industry leading performance and durability for your hazardous area lighting needs.

<b>Wattage</b>	<b>30W - 200W</b>	<b>10W - 60W</b>	<b>60W - 220W</b>
<b>Lumens</b>	<b>28,000 LM</b>	<b>8,100 LM</b>	<b>33,600 LM</b>
<b>Voltage</b>	<b>120-277V or 347-480V</b>	<b>120-277V or 347-480V</b>	<b>120-277V or 347-480V</b>
<b>Hazardous Rated</b>	<b>UL1598A &amp; UL844</b>	<b>UL1598A &amp; UL844</b>	<b>UL1598A &amp; UL844</b>
<b>IP Rating</b>	<b>Wet Location - IP66</b>	<b>Wet Location - IP66</b>	<b>Wet Location - IP66</b>
<b>UL/ETL Rated</b>	<b>✓</b>	<b>✓</b>	<b>✓</b>
<b>Warranty</b>	<b>5 Year</b>	<b>5 Year</b>	<b>5 Year</b>
<b>Temperature Rating</b>	<b>-40°C to 50°C</b>	<b>-40°C to 60°C</b>	<b>-40°C to 60°C</b>
<b>Customizable</b>	<b>✓</b>	<b>✓</b>	<b>✓</b>

**1-855-563-7284**



# The Details



## BL420

### Industrial Bay Light

High powered LED's offering superior brightness allow the BL420 Series Industrial bay light to excel in a variety of lighting applications. Built with high quality components, offering Lumisave's trusted Industrial strength, along with various accessories allow this fixture to shine in any application.



## HFL

### Marine / Hazardous Flood Light

The HFL Series Flood Light is the perfect solution for flood lighting applications in demanding environments. This fixture provides high output LED's along with high-quality construction offering industry leading performance and durability for your hazardous area lighting needs.



## XFL

### Marine / Explosion Proof Flood Light

The XFL Series Flood Light is the perfect solution for all explosion proof lighting applications. This fixture provides high output LED's along with high-quality construction offering industry leading performance and durability for your hazardous area lighting needs.

Wattage	30W / 60W / 80W	30W - 200W	30W - 220W
Lumens	9,525 LM	28,000 LM	30,800 LM
Voltage	120-277V or 347-480V	120-277V or 347-480V	120-277V or 347-480V
Hazardous Rated	✓	UL1598A & UL844	UL1598A & UL844
IP Rating	Wet Location - IP65	Wet Location - IP66	Wet Location - IP66
UL/ETL Rated	✓	✓	✓
Warranty	5 Year	5 Year	5 Year
Temperature Rating	-40°C to 40°C	-40°C to 40°C	-40°C to 55°C
Customizable	✓	✓	✓



# The Lumisave Advantage

---

- Our qualified lighting technicians assemble and inspect for quality all fixtures here in Canada
- Shorter lead times on purchases and quick turnarounds for all warranty claims, reducing downtime
- 5 year limited warranty on any defect in material or workmanship
- Technical support
- 80,000+ hours LED lifespan reducing maintenance costs
- Most fixtures are available in AC Voltages from 110V to 480V
- Our Heavy Industrial and Industrial series fixtures can be Hazardous Location Certified for:  
Class I Div 1/Zone 1, 2/Zone 2; Class II & Class III Div 2
- Marine Rated to UL1598A Standards
- Our rugged, weather proof designs are ready to tackle the harshest of climates



[www.lumisave.com](http://www.lumisave.com)





Industrial LED Technologies Ltd.  
*2098 Robertson Road, Prince George, BC, V2N 1X6*  
**1-855-563-7284**  
***www.lumisave.com***

