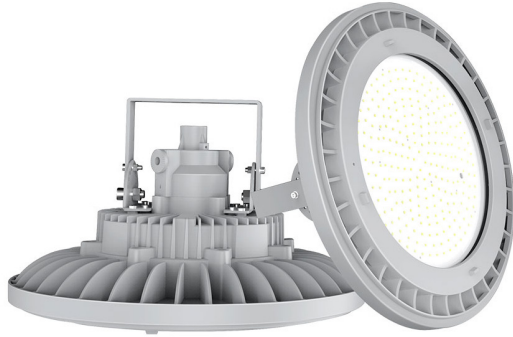


CLASS I, DIVISION 2, GROUPS A,B,C AND D | CLASS II, DIVISION 2, GROUPS F AND G
CLASS III | T-CLASS: T3C/T4/T4A/T5/T6
UL1598A MARINE OUTSIDE TYPE (SALTWATER)



The HBL-G2 is equipped with a corrosion-resistant and high-strength aluminum alloy housing, which is suitable for salt water and corrosive environment. It is very efficient and safe, and there are emergency options, installation options, etc., which is very suitable for your project. The HBL-G2 is coated with a non-metallic paint-like powder on the surface of the lamps enhancing corrosion resistance.

TECHNICAL SPECIFICATIONS

VOLTAGE	120-277V or 347-480V
POWER FACTOR	<95%
LED LUMINOUS EFFICIENCY	130 (LM/W)
MAX LUMEN OUTPUT	26,000LM
COLOUR TEMPERATURE	3000-6500K (5000K)
COLOUR RATING INDEX	Ra>70
LENS	Optical Glass
PROTECTION	IP67
FREQUENCY	50-60 Hz
LED CHIP	Phillips
LED DRIVER	Meanwell
MAXIMUM INTENSITY ANGLE	180°
WORK TEMPERATURE	-40°C to +50°C
WORK HUMIDITY	15% to 95% RH
CHIP LIFE EXPECTANCY	80000 Hrs
FIXTURE	Aluminum Alloy Housing - Industrial Grade Powder Coating
WEIGHT	3-14.3kg
APPROVED	CSA C22.2 No. 137; CSA C22.2 No. 250.0; UL 844; UL 1598; UL1598A

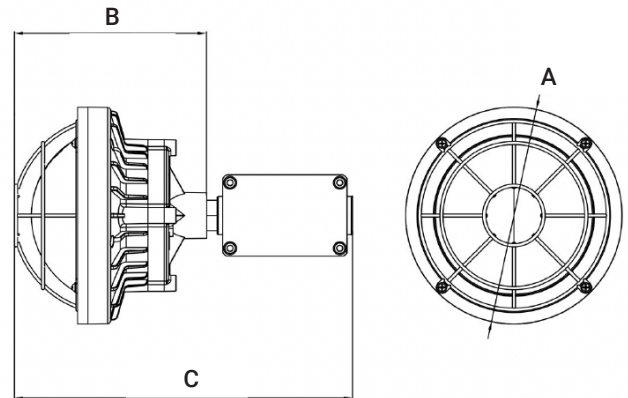


-40°C / +50°C

APPLICATIONS

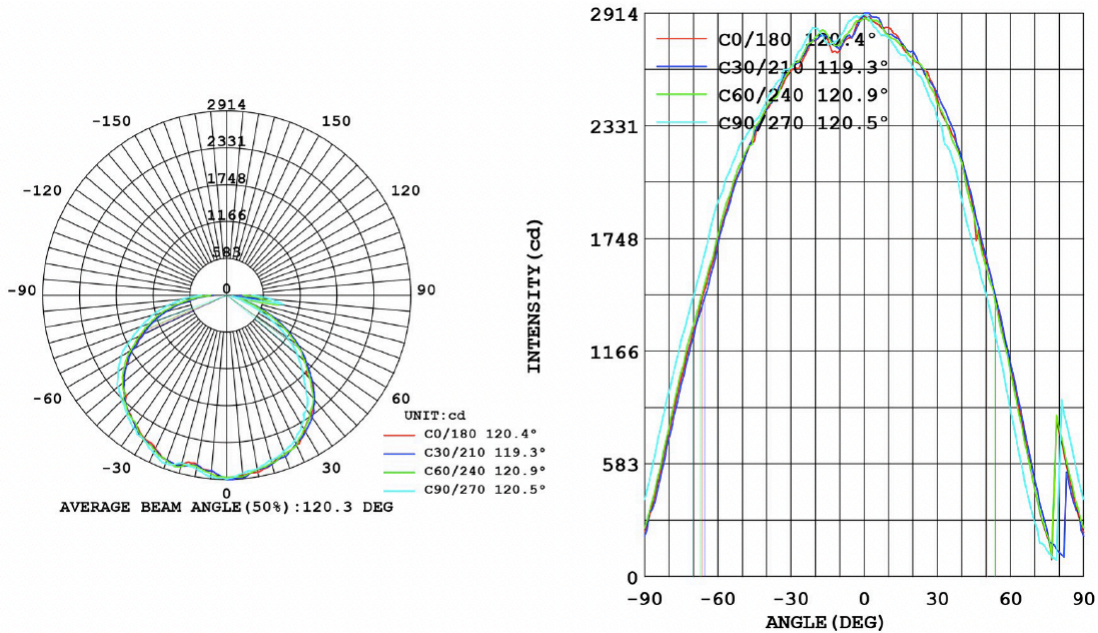
- Marine Environments
- Oil & Gas Facilities
- Electrical Buildings
- Mining Environments
- Forestry Facilities
- Indoor / Outdoor Applications
- Harsh Conditions
- Processing Facilities
- Manufacturing
- Hazardous Areas

DIMENSIONS

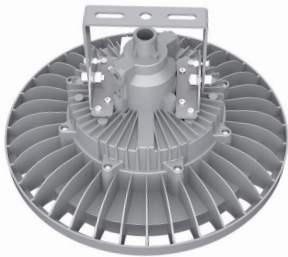


WATTAGE	A	B	C
30W	200mm	157mm	313mm
60W / 80W	300mm	204mm	353mm
150W/200W	460mm	243mm	392mm

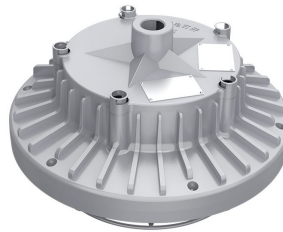
OPTICS



MOUNTING



STANDARD BRACKET
(BS)



PENDANT MOUNT
(MP)



STANCHION MOUNT
(UMS) (30W-80W)

ORDERING INFORMATION

PART NUMBER EXAMPLE: LS - HBL- G2 - 30W - MV - 40 - BS - 12D

WATTAGE	VOLTAGE	COLOUR TEMP	MOUNTING	OPTICS	ACCESSORIES
30W	MV 120-277VAC	30 3000K	BS STANDARD BRACKET	18D	BLANK N/A
60W	HV 347-480VAC	40 4000K	MP PENDANT MOUNT		
80W		50 5000K	UMS STANCHION		
150W		65 6500K	MOUNT		
200W					