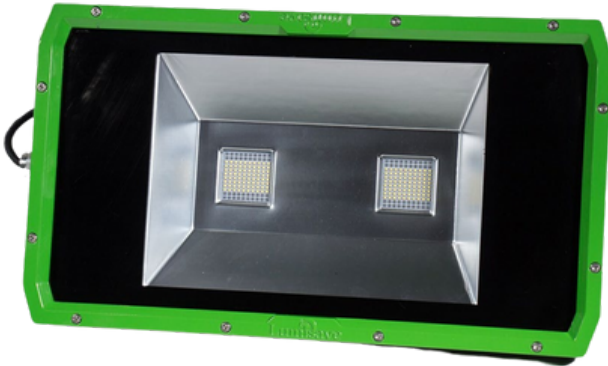


FL395 SERIES

150W

Hazardous Rated LED Flood Light

High Lumen Output
Optimized Retrofit Accessories Designed for industrial applications



-40°C | +40°C

Key Applications

- Heavy Industrial Applications
- Industrial Walkways and Catwalks
- Platform Lighting
- Storage Areas
- Operational Lighting
- Task Lighting
- Oil & Gas
- Mining
- Forestry
- General Location Areas

Compliances

UL/cUL Listed to:

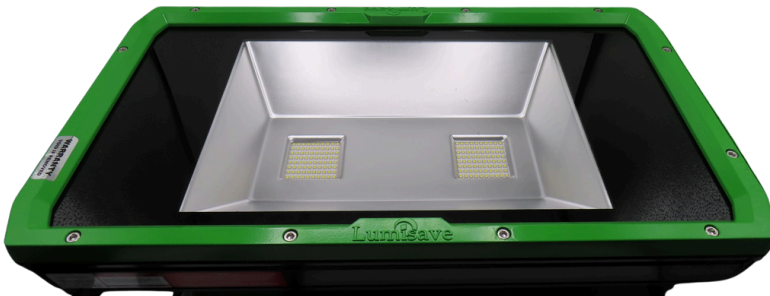
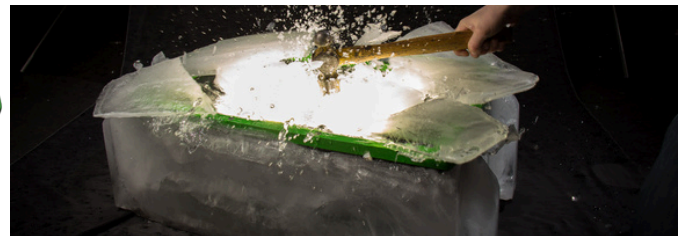
- CLASS I, DIV2/Zone 2 - T3C
- CLASS II & CLASS III, DIV 2 - T5

IP66

Specifications

Voltage	120-277V or 347-480V
Power Factor	<95%
Efficacy	150 Lumens/Watt
Lumen Output	22,500LM
Colour Temp.	5000K Standard
CRI	RA>70
Frequency	50-60Hz
LED Diodes	Lumileds 3030
Power Supply	Meanwell Series
Optics	120°
Operating Temp	-40°C to +40°C
Weight	37.5 LBS
Connections	Wired Connection
Mounting	Heavy Duty Bracket Slip Fitter + End Cap Bracket
Warranty	5 Year Standard

For IES files, see website or contact Lumisave

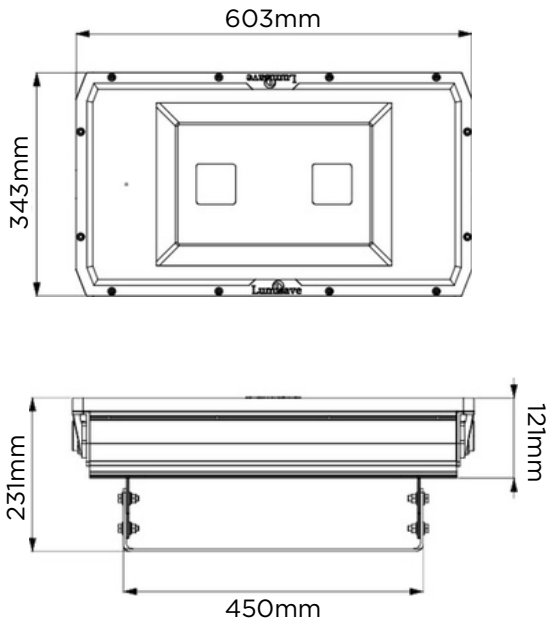


FL395 SERIES

Hazardous Rated LED Flood Light



Dimensions



Ordering Information

Example: LS-FL395-150W-MV-LX-W7-BH-H1

Model	Wattage	Voltage	Lens	Cable	Mounting	Location
LS-FL395	150W	MV	LX	W7	BH	H1
		HV	LXF	W (X)	BE	

Wattage	Volatge	Lens	Cable	Mounting	Location
150W	MV 120-277Vac	LX Lexan	W7 Standard	BH Heavy Duty Bracket	H1 Hazardous
	HV 277-480Vac	LXF Frosted Lexan	W(X) Custom Length	BE Slipfitter	

Notes

- 1 Special project pricing and support available upon inquiry
- 2 Product customization available upon consultation

Mounting



Heavy Duty Bracket (BH)



Slipfitter + End Cap Bracket (BE)