



CST COAL CASE STUDY



Customer Response

“I am greatly impressed by the Lumisave team with their service quality and speedy responses on inquiries, questions and problems of any nature. I have not encountered such service anywhere in my 27+ years of working in heavy industry in Canada or South Africa. The products I use from Lumisave are all good quality products, I cannot see anyone going wrong using them.” - Ian Buys, Electrical Foreman Process Plant, CST Coal

Lumisave, the name you can trust.

Since 2009, Lumisave has been committed to developing a high quality, durable and reliable industrial LED fixture. Using innovative technologies and working closely with certified testing agents, Lumisave has been able to provide better energy savings while also able to provide custom products to meet the ever changing needs of our customers.

Located in beautiful Prince George, BC; Lumisave is proud to be one of Canada's most northern industrial LED fixture manufacturers.

Overview

CST Coal is located 20 km of Grande Cache, Alberta. As shown on the map below this is about 1/2 way between Prince George, BC and Edmonton, Alberta. In July 2018 CST, acquired the assets of Grande Cache Coal. The mine is both an open pit and underground operation mining metallurgical coal. It is currently estimated to have an operational life for another 20 years. In December 2021, the company announced it was resuming operations at the No. 8 surface operation with the processing plant starting up again returning from a maintenance mode caused by the COVID19 pandemic.

The Project

In 2019 Lumisave visited the site and conducted a lighting Audit to guide the electrical team in determining the recommended light coverage for the various parts of the mine. The electrical foreman at the processing plant – Ian Buys has now installed numerous Lumisave lights at the millwright shop, the bays of the mechanic shop and the parking lot.

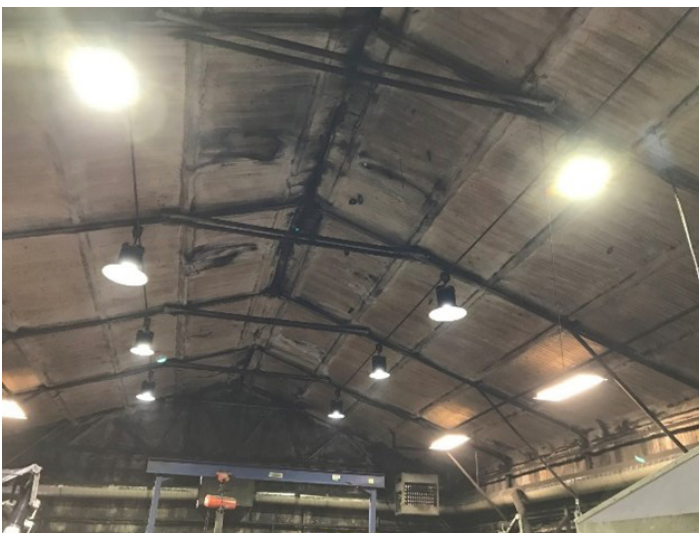
The Lighting Summary

CST Coal have been a leader is safety and environmental legislation and regulations. Lumisave has worked closely with the CST Coal team to help them to optimize safety on their sites by improving lighting levels while cutting down on light pollution and operating costs. Our lights typically last up to 70% longer than the lights they were using before, and they use less energy as well. Our lighting has helped CST Coal to ensure the safety of their employees by providing much better and more even light in dangerous locations.

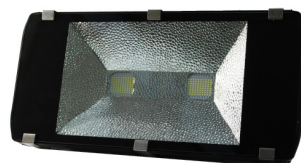
Results

Through the completion of the lighting project CST Coal has seen the following benefits:

- Improved safe lighting levels.
 - 70% reduction in energy consumption when comparing Lumisave's LED solution to traditional H.I.D lighting.
 - 100% reduction in scheduled lighting maintenance, when compared to traditional H.I.D lighting.
 - 100% worker satisfaction and feedback.
-



The Products



BL550

Light Industrial Bay Light

This new LED bay light fixture has been built from the ground up by Lumisave with our customers in mind. Combining customer feedback and suggestions, along with the Lumisave product quality, the goal was to create a fixture which offers a perfect solution for various high bay and low bay lighting needs.

FL390

Industrial LED

When a long-life lamp is required, please consider the FL390 series. Customizable options such as lenses, mounting and voltage make our product fit each of our customer's needs. The FL390 is one of the toughest products in our lineup. Fully customizable to meet all applications.

FL550

High-powered Flood Light

The FL550 Series Flood Light is the perfect solution for high mounting applications. With high performance LED's along with high-quality construction, this fixture performs efficiently and reliably within any environment it is utilized within.

Wattage	215W	150W	240W / 480W
Lumens	27,000 LM	16,972 LM	65,000 LM
Voltage	120-277V or 347-480V	120-277V or 347-480V	120-277V or 347-480V
Hazardous Rated	N/A	✓	
IP Rating	Wet Location - IP66	Wet Location - IP65	Wet Location - IP65
UL/ETL Rated	✓	✓	✓
Warranty	5 Year	5 Year	5 Year
Temperature Rating	-40°C to 40°C	-40°C to 40°C	-40°C to 50°C

1-855-563-7284



Industrial LED Technologies Ltd.

2098 Robertson Road, Prince George, BC, V2N 1X6

1-855-563-7284

www.lumisave.com

